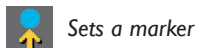
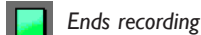
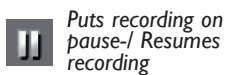




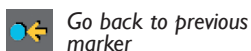
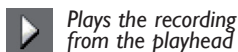
Record

THE RECORD TOOL COLLECTS AND ARRANGES MICROPHONE RECORDINGS.

Recording

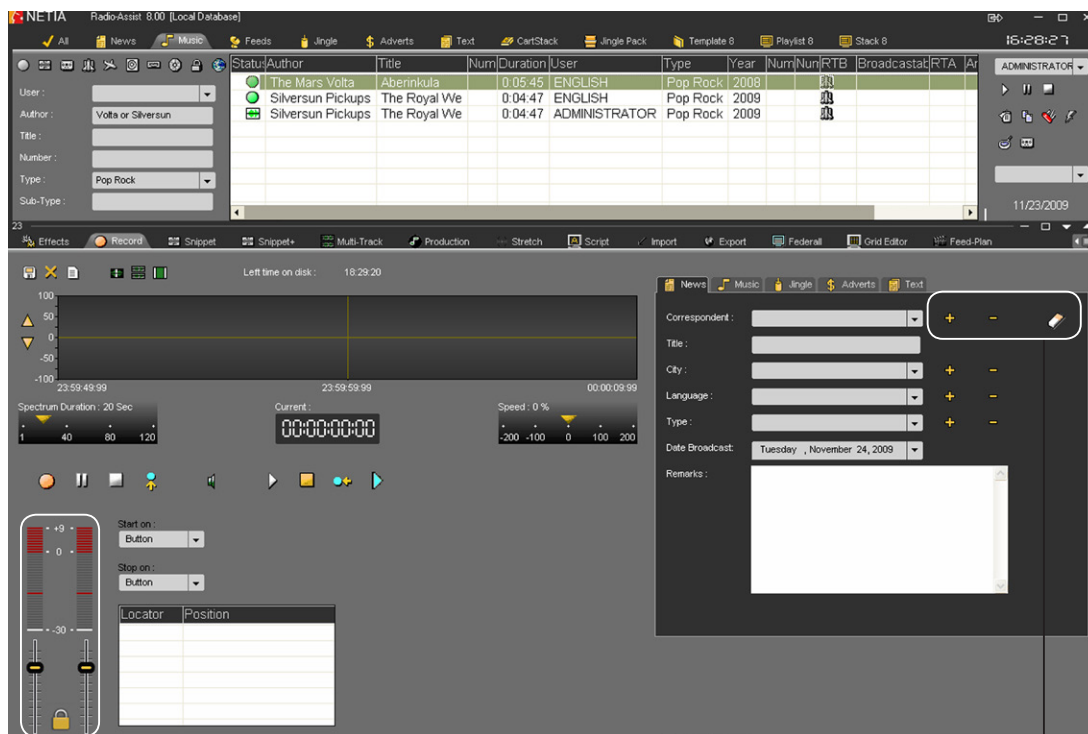


Play




Recording
a document

- 1 - Set the sound input level. 2 - Start recording.
- 3 - End the recording (stop). Several takes can be done by repeating the above operations.
- 4 - Select the best take. 5 - Fill in the identity sheet.
- 6 - Save.



Sound input level

Identity sheet

 Creates a new term in the list

 Deletes displayed data

 Deletes all displayed data

Snippet (monotrack)

THE SNIPPET TOOL IS A USER-FRIENDLY WAY TO DO SIMPLE OR COMPLEX EDIT WORK.

Save
Ctrl+S

New document - Ctrl+N

Cancel - Ctrl+Z
Redo - Ctrl+Y

Playing speed

Recently used items
for the edit

Sound volume

Save as

F1 Places a marker on the spectrum
(insertion at the red line)

Horizontal zoom:
Orange arrows.

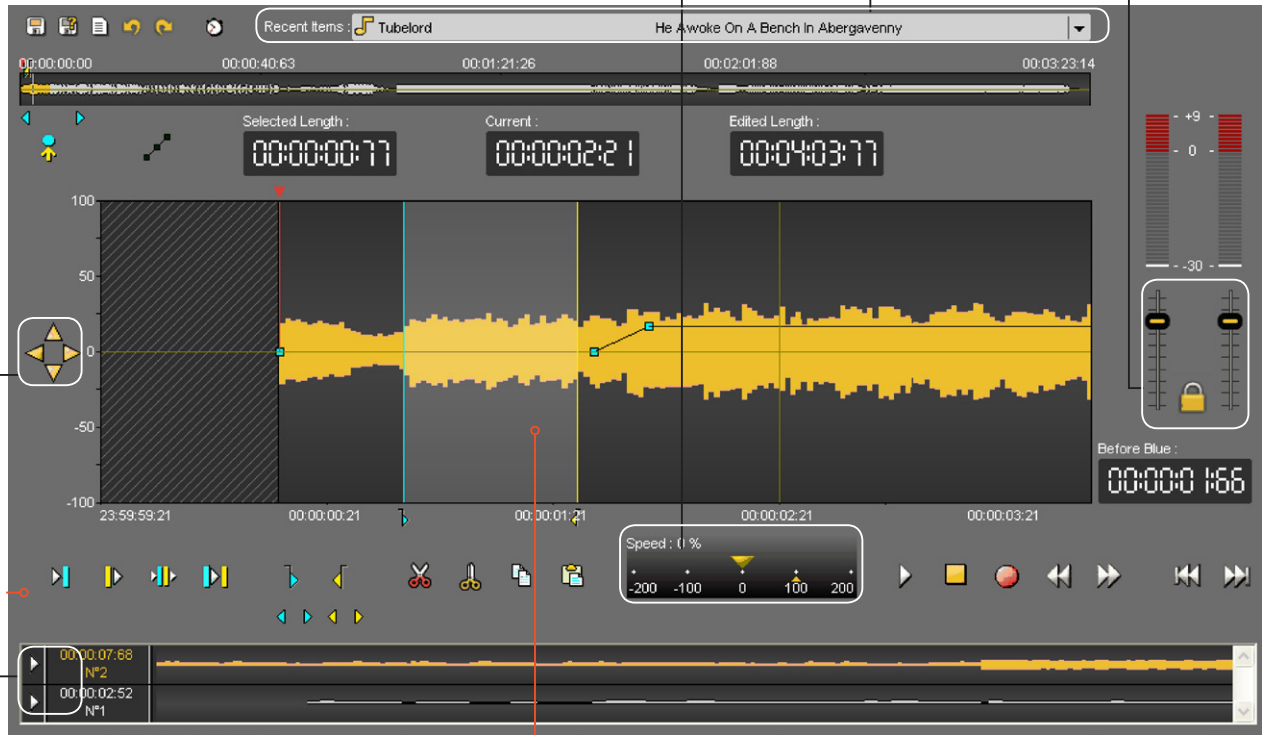
Zoom up:
Ctrl + right arrow
Zoom down:
Ctrl + left arrow

Vertical Zoom:

Orange arrows.
Zoom up:
Ctrl + up arrow
Zoom down:
Ctrl + down arrow

Access to a range
of functions with a
right click on a
sequence line:

- play a cut sequence
- rename it
- paste it
- save it with another name (it will be inserted in the database as a new file)



Plays 2 secs
before the blue line

Plays 2 secs
after the yellow line

Plays 2 secs before
the blue and after
the yellow **F6**

Plays 2 secs after
the blue and
before the yellow **F7**

Go to blue line

Go to yellow line

F10 Fast rewind

F11 Fast forward

Selecting a sequence:

Just click and move it to
the spectrum. The selected
sequence turns black.

Ctrl A Select all the
track.

Start of cut
Set blue line **F3**

End of cut
Set yellow line **F4**

Change the begin
of a cut

Change the end
of a cut

Slow forward
play **F9**

Slow back
play **F8**

Cut selection
(cut is binned) **F5**
or **Delete**

F5 Cut (cut
isn't binned)
↑ shift

Normal play
Space bar

Pause

Stop
Space bar

Go to
start

Go to
end

Snippet + (multitrack)

THE SNIPPET + TOOL MIXES DIFFERENT ITEMS (VOICE, MUSIC OR OTHER SOUNDS) ON SEVERAL TRACKS.

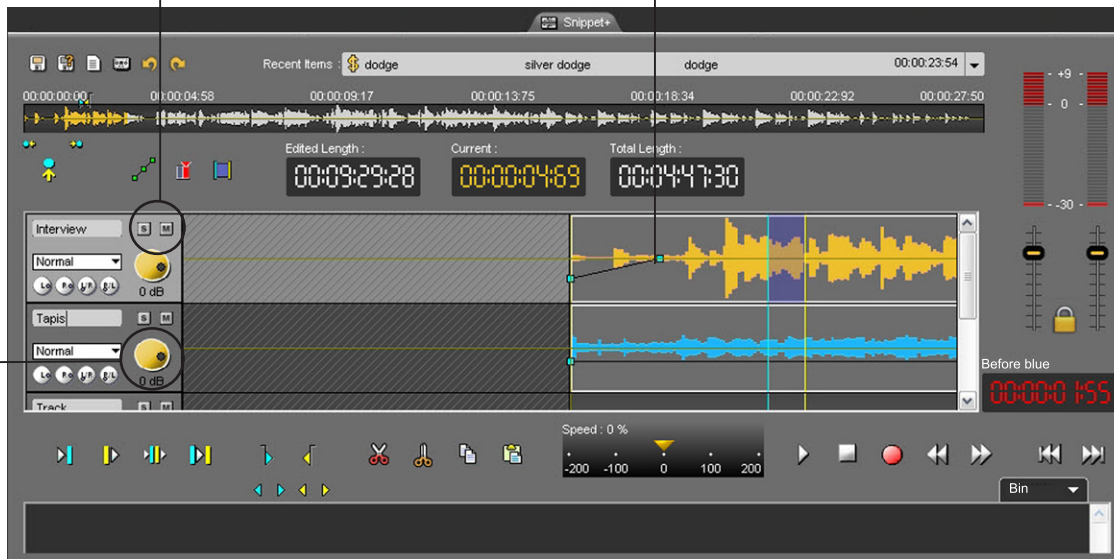
To raise the level of the track, click on the button and gradually move the mouse upwards.

To lower the level, gradually move the mouse downwards.

Listen to one isolated track (S) or mute the track (M)

Modifying the sound level of a sequence

Move the blue squares which start and end a sequence to adjust the fade levels. You can create or delete points with a right click of the mouse.



F5 Split the clip in clip mode

Delete Delete the clip in clip mode

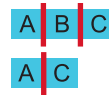
Cuts the selected sequence

Copies a sequence Ctrl+C

Pastes what was cut - Ctrl+V

Insertion Mode

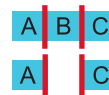
In this mode, the selected block disappears and goes to the bin, the remaining blocks join together.



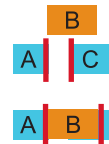
When cutting

Replacement Mode

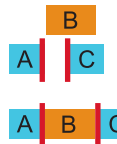
In this mode, the selected block disappears and goes to the bin, leaving an empty space on the track.



When pasting



In this mode, we want to insert block B just BETWEEN blocks A and C. As we insert block B into the desired location, block B will push block C towards the right side to avoid overwriting block C.



When recording




In this mode, we start the recording from where the playhead is. The new block corresponding to the recording in progress will push all blocks on the right side.


In this mode, we want to insert block B just BETWEEN blocks A and C. Block B is inserted where the playhead is but if there is not enough space to insert block B, the next block(s) will be overwritten.

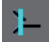
In this mode, we start the recording from where the playhead is. The new block corresponding to the recording in progress will overwrite the other blocks on the right side.


Production


THE PRODUCTION TOOL PREPARES DOCUMENTS FOR BROADCASTING. YOU CAN SET “MUSIC” DOCUMENT SOUND LEVELS, WORK ON FADE-IN AND FADE-OUT POINTS, SPECIFY INPUT AND OUTPUT POINTS AND RELAYS.


 Sets the Fade-In start point


 Sets the Fade-Out start point


 Sets a lead-in start point (the end of the item A will play at the same time as the start of the item B).


 Defines relays / GPI (for switchovers)

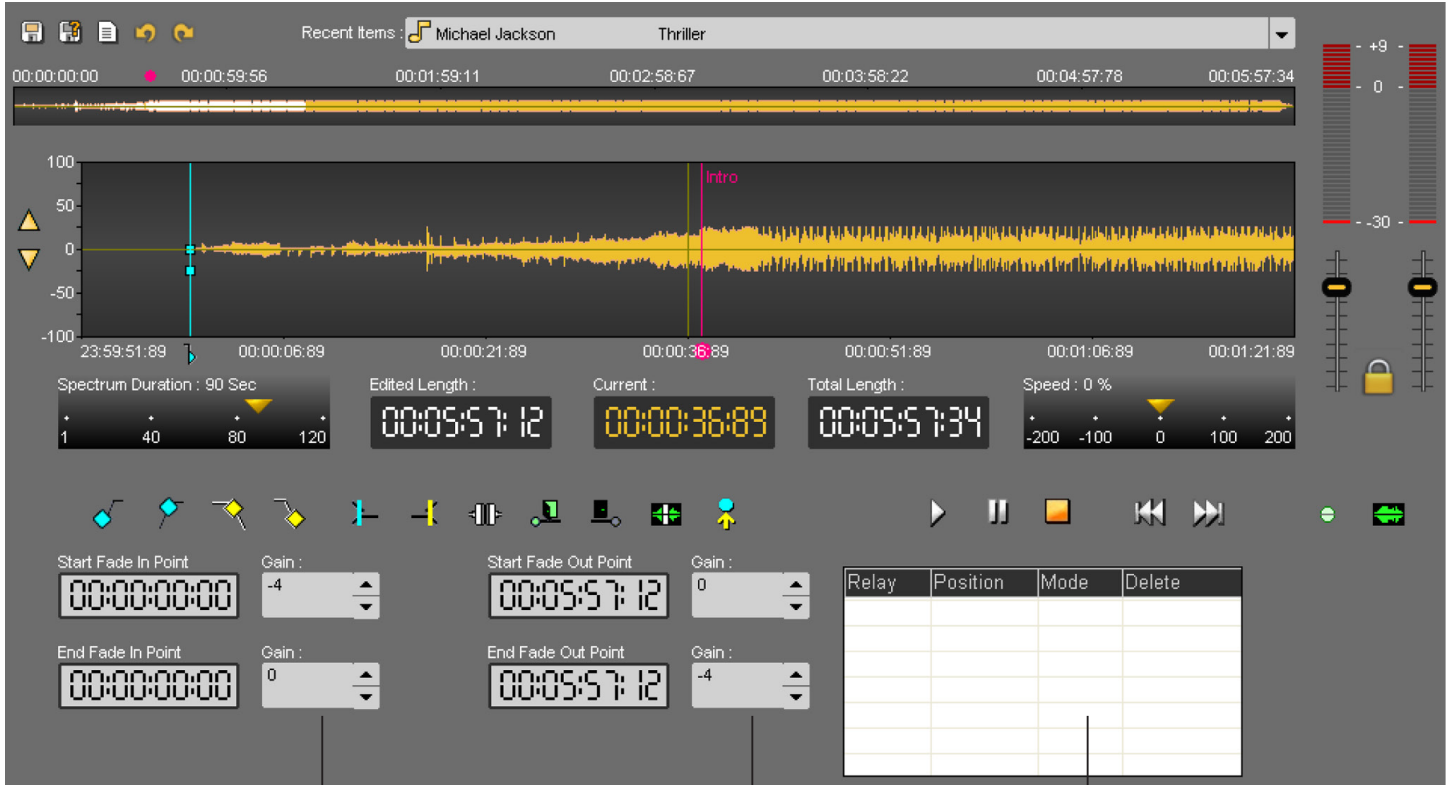
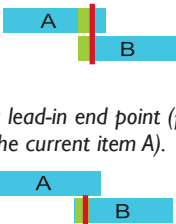
 Sets the Fade-In end point

 Sets the Fade-Out end point

 Sets a lead-in end point (play the item B over the current item A).

 Marks the end of the intro (information on when the presenter comes in)

 Marks the start of the outro



Information on Fade-In and Fade-Out positions

Information on relay modes and positions

Import

THE IMPORT TAB IS USED TO IMPORT INTO THE RADIO-ASSIST DATABASE ONE OR MORE DOCUMENTS FROM AN EXTERNAL SOURCE. THE NEW DOCUMENT, IMPORTED FROM HARD DISK, CD, MD, NAGRA OR FTP, CAN THEN BE ACCESSSED FOR EDITING PURPOSES.

Left side:
list of documents
to import



Imports all
documents in
the list

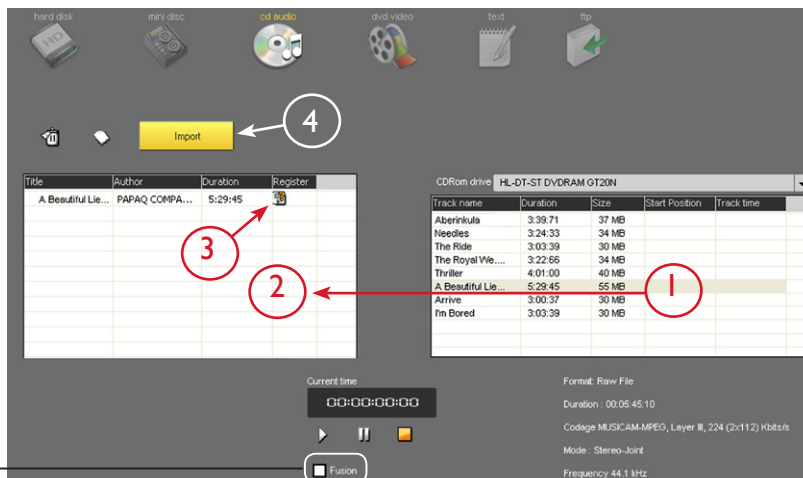


Creates a new list



Deletes the selected
item from the list

Fusion mode allows the
user to generate a single
imported or exported file
from various selected items.



Importing
a document

- 1 - Select a track in the right side (click on it)
- 2 - Drag & drop the item from the right side to the left
- 3 - Fill in its identity sheet (click on the save icon, which will change into an OK icon)
- 4 - When all the documents are in the list, click on the Import button.

Right side:
external support drive
tools (CD, MD, etc.)

You can:



Stop



Play the
selected track



Put on Pause



Select a target
directory on the
hard disk

Export

THE EXPORT TAB IS USED TO EXPORT FROM THE RADIO-ASSIST DATABASE ONE OR MORE DOCUMENTS TO AN EXTERNAL SOURCE.

Left side:
list of documents
to export



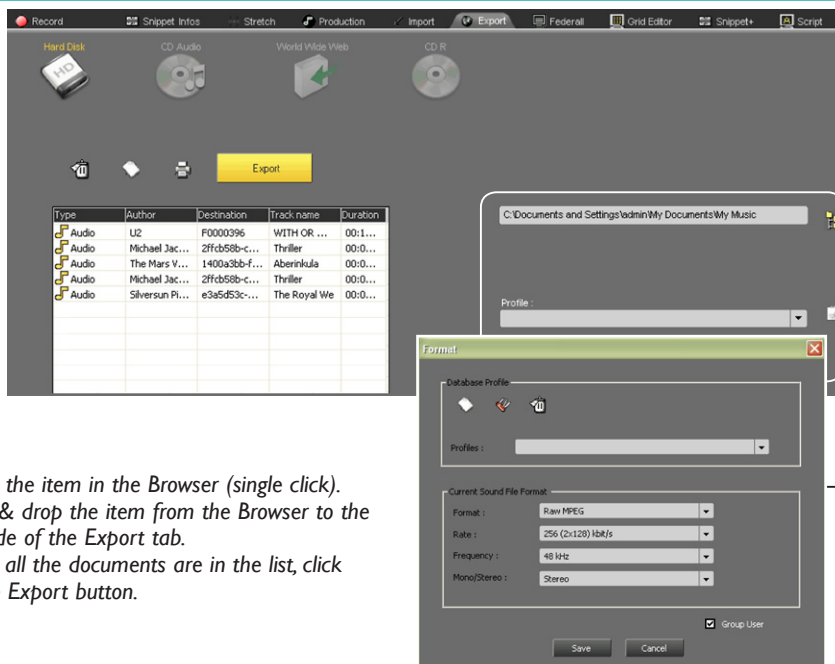
Exports all
documents in
the list



Creates a new list



Deletes the selected
item from the list



Exporter un
document

- 1 - Select the item in the Browser (single click).
- 2 - Drag & drop the item from the Browser to the left side of the Export tab.
- 3 - When all the documents are in the list, click on the Export button.

Right side:
to select the document
target (hard disk, CD,
MD, Nagra, FTP, etc.)

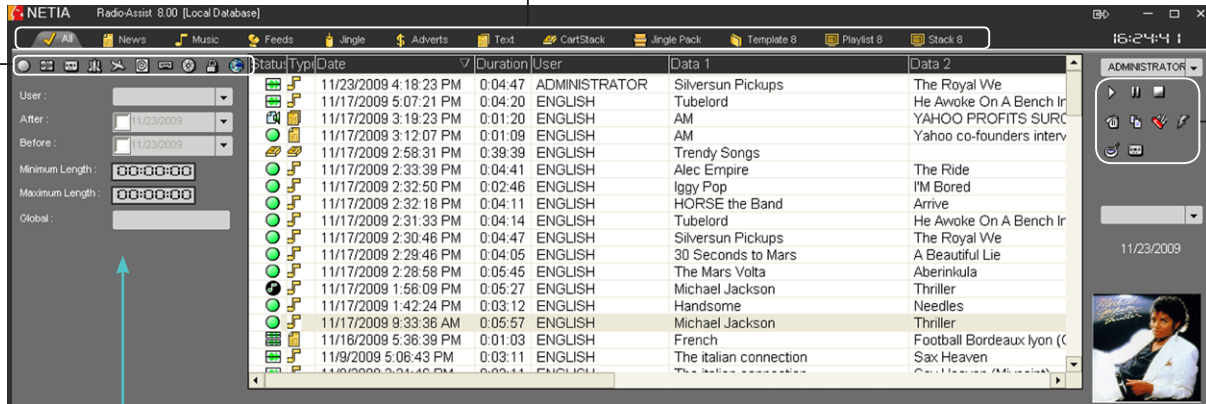


Selects a target
directory on
the hard disk

Format and technical data
for document export.
You can change the settings
or use the default ones.

Finding a document

Tabs for a search by document type



To speed up the search for a document, select a number of specific search criteria for each type of document (these are different in each tab).

To select a criterion:

- choose a criterion in the dropdown list,
- or enter the name you want in the field and validate (press Enter on the keyboard).

Search by alphabetical order or date:

click on a column heading (a little arrow appears beside it and gives the classification order. You can reverse the order by giving another click on the column).

Document status

Click on any of these icons to display the corresponding documents (click again to deactivate them, otherwise a search will always be restricted to the criteria selected).



Raw item (original file)



Edited documents
(already edited)



Master documents



Ready-to-Broadcast
documents



Broadcastable
documents



Ready-to-Archive
documents



Archivable documents



Archived documents



Locked documents
(cannot be deleted)

Search Zone tools



Deletes
the selected
document
Ctrl+D



Copies
the selected
document
Ctrl+L



Modifies
the settings of
the selected
document - Ctrl+M



Marks
the selected
document
as urgent



Launches
a search



Generates
a Master
Ctrl+G



www.netia.com